

### OVER SLOPPY SNOW TO YUKON'S INTERIOR

Mr. Boyle Made a Record Run from Whitehorse in His New Automobile.

Dawson, April 29.—Joseph W. Boyle arrived today in his motor car from Whitehorse, his ma-

chine being the second ever over the trail. He broke the inbound record, making the three hundred and forty miles travelling for a few hours each night for a week. He came through without a break. Mr. Boyle says that the winter roads can be maintained with success for motor cars with more road improvement and a system of plowing off the deepest falls of snow occasionally.

Manrico Smith also started from Whitehorse, but he stopped halfway and will wait for the river to open.

#### Ikeda Group Still Unsold.

A few weeks ago a report was published to the effect that the Ikeda group of copper claims on Moresby Island had been sold to an English syndicate. Mr. W. H.

Armstrong of Vancouver, one of the ten owners of this group of claims, originally developed by a Japanese company, states that no sale of the claims has been consummated. An eastern company had taken an option on the group some time ago, but up to the present no step has been made toward the taking up of the option.

### NEWS NOTES FROM GRAHAM ISLAND

J. Walsh of Tl-el River, returned Wednesday from the south. Mr. Walsh brought back with him several pairs of Belgium hares for propagation purposes on his farm, which is the best on the islands.

Col. Harrison of London, England, who is president of the Cumshewa Mining & Development Company, which has been reorganized, is expected on a visit to the company's property in the course of a few weeks.

The trail between Queen Charlotte and Skidegate is now in excellent condition, after the attention given it by Foreman T. R. Davey and his crew of stalwarts. They are now engaged on the trail from the townsite to the Honna River.

The lighthouse tender Quadra arrived at Masset recently with the material for lights to be installed at the entrance to Masset Inlet. There will be two lights, placed on elevations, on the east side of the entrance, one light showing up the inlet and the other out to sea. The structures for carrying the lights are in course of erection.

Messrs. Christie and Sewell, who had large parties of prospective purchasers looking over the respective properties they are disposing of, left Masset for the south on the last steamer. They intend to return and make permanent homes on the island.

Mr. J. D. Gilmour, manager of the Wallace Fisheries, has returned to Naden Harbor and is arranging for the opening up of the season's work.

The saw mill at Masset townsite commenced operations under Wanliss Bros., the purchasers. Arrangements have been made to cut ten thousand feet of lumber daily.

A government road is being constructed from New Masset to the Indian reserve, under the superintendence of Charles Spence.

The saw mills at Sewell City and Masset townsite are running full blast and cutting timber for the house builders on the inlet.

Mr. Cullison and a crew of workmen are engaged in constructing two towers on the point leading into Masset Inlet for the placing of range lights. The work will be completed by the first of May and the lights will be in operation early in the same month.

A bridge is to be constructed connecting Masset townsite with Delkatla, and a dyke is to be placed across Delkatla Inlet to open up the hundreds of acres of splendid land which is now overflowed at high water.

Two launches from Alaska arrived at Masset recently with parties of Haida Indians from Haidaburg, a new settlement 45 miles from Graham Island. Among the visitors was Rev. Samuel Davis, a native preacher, who has been with the Indians there for the past fifteen years. It is his intention to move from Alaska to Masset, where he has a number of relatives.

The steamer British Empire called at Masset townsite and the reserve on Wednesday last with freight for both places.

#### Pastor for the Islands.

Rev. Mr. Bygrave, who arrived at Queen Charlotte City last week from Vancouver, has been appointed to the charge of the Queen Charlotte Islands by the home mission committee of the Presbyterian Church. Mr. Bygrave is an ordained clergyman and will make his headquarters at Queen Charlotte City. For the present services will be held at Aliford Bay, Skidegate and Queen Charlotte, but later he will visit the other settlements on the islands and hold services.

Subscribe for the Daily News.

"FROM HOME TO HOME."

## HOTEL ELYSIUM

Sid. Sykes, Manager

The Finest, Newest and Most Up-to-date Hotel in Vancouver. "Excellent Cafe. Moderate Prices."

1142 Pender Street West - Vancouver, B.C. Phone 8500.

## KA IEN HARDWARE COMPANY

THIRD ANENUE P.O. DRAWER 1524 PHONE No. 3

Builders' Supplies  
Plumbers' Supplies  
Paints  
Oils  
Varnishes

### HARDWARE

Sheet and Plate Glass  
Plate Glass Mirrors  
Stoves, Ranges  
Tinware  
Graniteware

MONARCH MALLEABLE The "Stay Satisfactory Range."

## FRED STORK'S HARDWARE

Established 1908

Carpenters' Tools	Builders' Hardware	Ship Chandlery
Wire Cable	Steel Blocks	Fishing Tackle
Iron Pipe	Pipe Fittings	Rifles & Shotguns
Rope	Valves	Ammunition
Pumps	Hose	Paint
Stoves & Ranges	Rubberoid Roofing	Corrugated Iron

"We Sell Nothing But the Best"

ASK FOR COMPLETE LITERATURE AND

PHOTOGRAPHS OF

## PORT EDWARD, B.C.

Prince Rupert's Industrial Annex

This industrial addition to Prince Rupert comes now at a time when opportunity is greatest. Prince Rupert and the entire great Northern British Columbia country are on the eve of a tremendous movement. Values will go up remarkably during the present year and the years immediately following. Port Edward prices are low now. This is the time to buy.

Call On or Write To

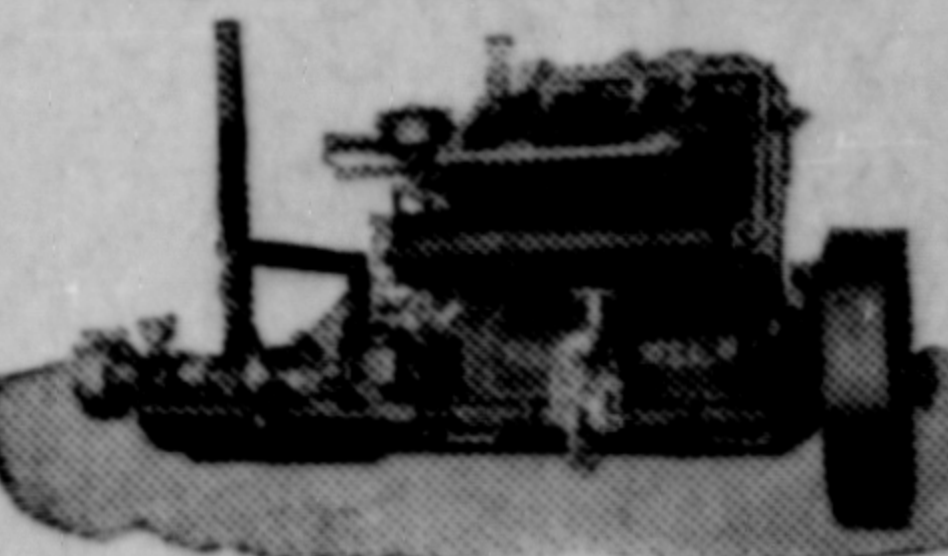
## HARRISON, GAMBLE & CO.

Third Avenue Opposite Post Office

### Regal Marine Engines

"They are built to run and do it."

Light, medium and heavy duty types



To Suit all requirements

### Perfection Marine Motors

With patent Ignitor, no coil, no batteries necessary.

### Evinrude Detachable Row Boat Motors

Attached to stern of boat in a minute. A lady or child can run them.

We carry the largest stock of Gasoline Marine Engines in Northern B.C.

Send for Catalogue

## Parkin & Ward Electric Co., Limited

Prince Rupert, B.C.

# J. D. ALLEN SIXTH STREET PHOTO CO. SIXTH STREET

# REMOVAL SALE

Everything to be Sold at Less than Cost

## FOR THE OFFICE

ARTICLE	ORIGINAL PRICE	SALE PRICE
Shannon Files - - - - -	1.00	65c.
Ottawa Files - - - - -	.60	40c.
Columbia Box Files - - - - -	.50	30c.
Wire Waste Paper Baskets - - - - -	.75	40c.
Wire Letter Trays - - - - -	.60	35c.
Stephens' Ink, Qts. - - - - -	1.25	85c.
Stephen's Ink, Pints - - - - -	.75	50c.
Gloy - - - - -	35c & 65c Sizes for	20c & 40c.
Waterwell Paste - - - - -	.35	20c.
Typewriter Paper - - - - -	From 65c. to 1.75 per 500 sheets	
Ink Wells, in Great Varieties		
Office Scrap Books, always useful and necessary.		
Desk Pads - - - - -	1.00	75c.

## FOR THE HOME

Brass Jardinières	Scrap Albums
Pictures	Photo Albums
Umbrella Stands	Cameras
Pedestal Jardinières	Writing Tablets
Ash Trays	Playing Cards
Pin Trays	Tally Cards
Books	Bridge Scores and Bridge Sets
Toys and Dolls	Dominoes
Ladies' and Family Stationery	Purses, Etc.

## FOR MEN

Pocket Books	Whisks	Chessmen
Shaving Brushes	Tooth Brushes	Cards
Hair Brushes	Pipe Racks	Poker Chips

EVERYTHING MUST GO AT LESS THAN COST

## FARM LANDS

—IN THE—  
Skeena Valley Nechaco Valley  
Bulkley Valley Fort George District  
—IN TRACTS OF 160 ACRES AND UPWARDS—  
Carefully selected Lands at Reasonable Prices and on easy terms.

## FARM LANDS

NORTH COAST LAND COMPANY, Limited  
PAID UP CAPITAL \$1,500,000.00 VANCOUVER, B.C.