



BUILDING MATERIALS and Supplies
ROOFING · HARDWARE · LUMBER · CEMENT · PAINT · ETC.
CONGRATULATIONS
to **Columbia Cellulose Company**
from **PHILPOTT, EVITT & CO., LTD.**
PRINCE RUPERT, B. C.

By Land, By Sea And Air

No longer is Prince Rupert a place difficult to come to for it is today served by all the modern means of transportation: steamship, railway, bus and air services.

Three steamship lines, the Canadian National, Canadian Pacific and Union, between them give Prince Rupert a daily service from Vancouver. These vessels sail the famed Inland Passage amid the grandest of coastal scenery on waters mostly calm.

Depending on the line, vessels make the trip from 36 to 72 hours. Passengers are offered the best in cuisine and comfort, making this route a favorite among tourists.

For the business man, there is

daily air service provided by Canadian Pacific Air Lines, who also carry mail. The trip averages six hours, with two stops. Another air service will soon be operated by Queen Charlotte Airlines, a scheduled run from Vancouver to Ocean Falls, and to Prince Rupert.

The Canadian National Railway has its terminal in Prince Rupert, its right-of-way passing through some of the world's most magnificent scenery and historical territory.

The Skeena highway, undergoing hard-surfacing this summer, for the most part runs close to and parallel to the railroad from Prince Rupert to Prince George, where it connects with the transcontinental highway to Vancouver.

A motorist, leaving Vancouver, with easy travelling can reach Prince George in three days, and on the fifth day land in Prince Rupert.

Also, a bus service to Smithers, halfway between Prince Rupert and Prince George, is to be operated by Canadian National Railways this summer.

A charter for air service be-

Highway Beautiful

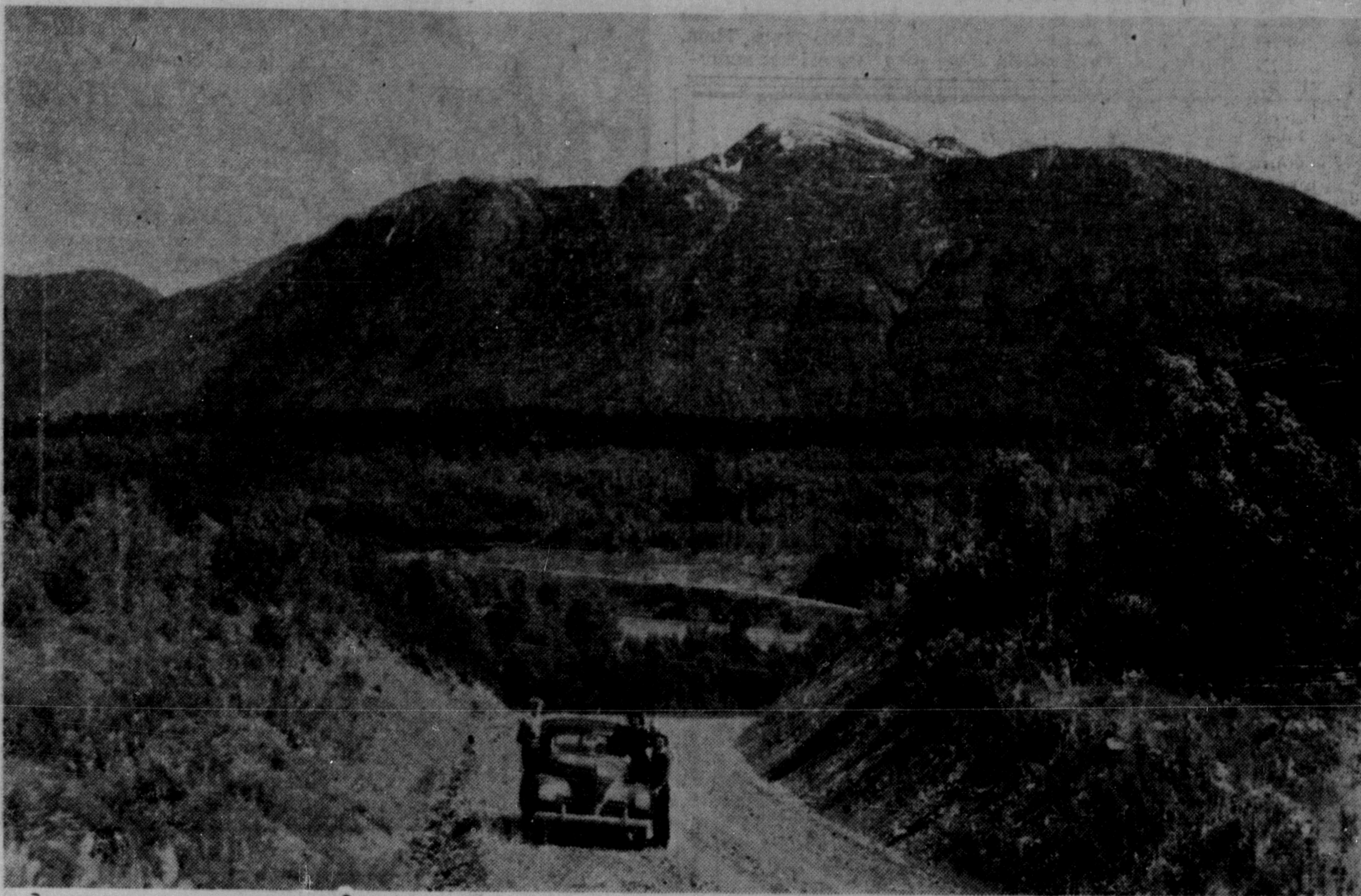
The Skeena Highway, Highway No. 16, or just plain River Road, completed from Prince Rupert to Prince George in 1945, is to see another phase of construction this year — a commencement of hard-surfacing.

An all-weather traffic artery, penetrating the heart of Central British Columbia has been the demand of northern Boards of Trade and Chambers of Com-

merce since the road opened. Of particular demand is a year-round road to Terrace from Prince Rupert, sometimes snow-bound for several months during the winter due to a high precipitation area in the mountainous area halfway from either point.

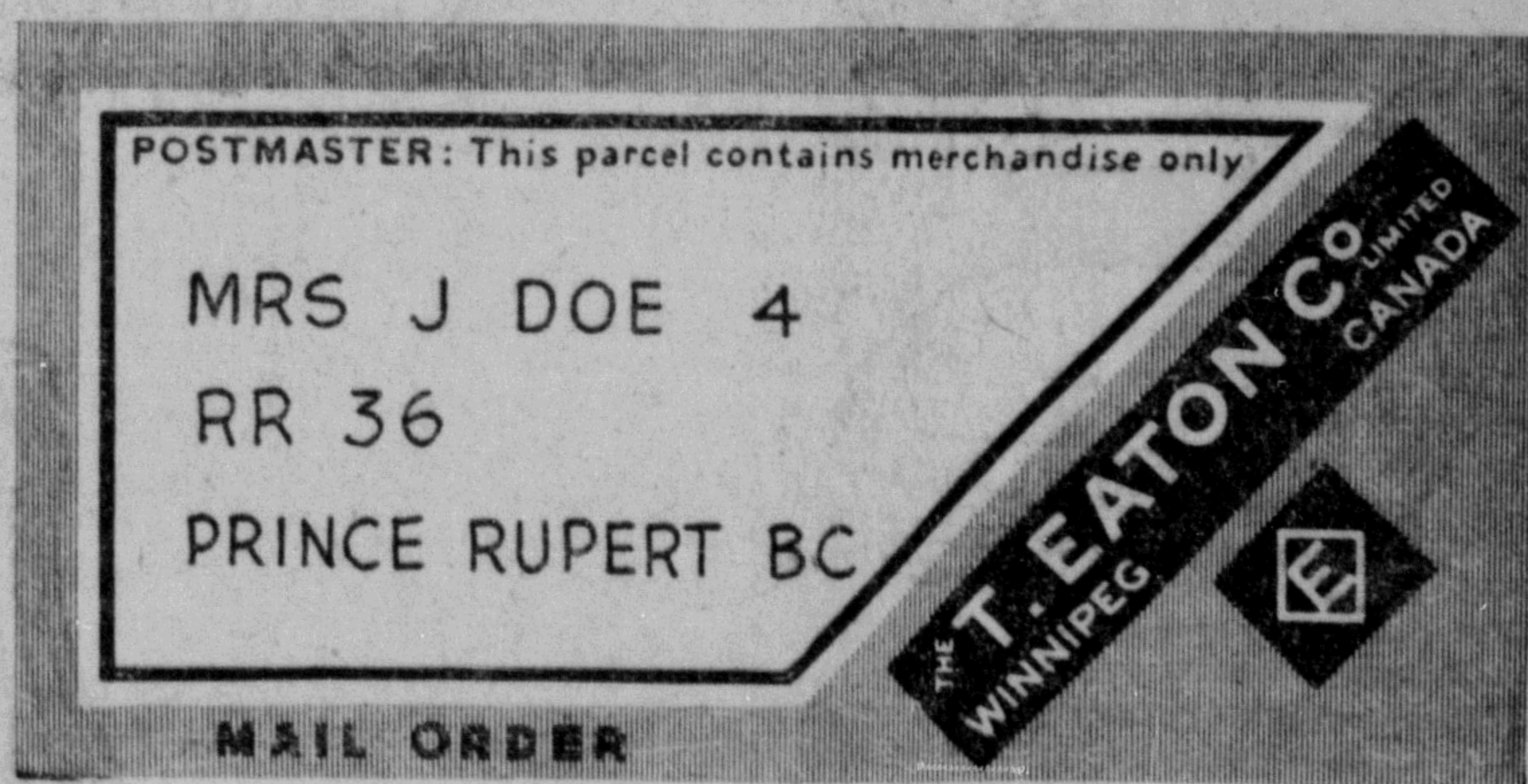
The Skeena highway, when black-topped, is expected to give motorists an outstanding travel feature, for in its course of 467 miles, from Prince George to Prince Rupert, it passes through an area of agriculture, mining, hunting and fishing, lumbering and a tract of scenic splendor marked by historic Indian villages, totems and high rugged peaks.

All along the highway, which was completed in 1945, are found remains of ancient B.C. Indian history, such as the remarkable totem poles at Kispiox, and many tales of Indian lore about which backwoods people love to speak. And in Prince Rupert itself, one of the finest Indian curio collections in the world is housed in its public museum.



RIVER HIGHWAY is what No. 16 generally goes by, for most of its 467 miles runs along the Skeena and Bulkley rivers. Hazelton, 177 miles from Prince Rupert, is where the two rivers join.

A familiar sight
in **WESTERN HOMES**



since the turn of the century

MILLIONS OF PARCELS BEARING THE FAMILIAR EATON ADDRESS LABEL HAVE STREAMED OUT TO CUSTOMERS IN WESTERN CANADA IN EVER-INCREASING VOLUME—PROOF THAT EATON'S HAS ALWAYS BEEN ABLE TO MEET THE CHALLENGE OF THE WEST'S RAPID GROWTH. EATON'S HAS EXPANDED WITH THE WEST IN ORDER TO SERVE THOSE COMMUNITIES WHICH HAVE FOSTERED NEW AND SUCCESSFUL INDUSTRIES . . . INDUSTRIES, SUCH AS THE COLUMBIA CELLULOSE PULP MILL IN PRINCE RUPERT. THIS NEW MILL SHOULD ADD EVEN MORE TO THE FAME AND PROSPERITY OF THIS PROGRESSIVE CITY

EATON'S EXTENDS HEARTIEST CONGRATULATIONS AND BEST WISHES FOR SUCCESS TO THIS NEW PRINCE RUPERT VENTURE.



"It Pays to Shop at EATON'S"

Phone or, Visit **EATON'S** Prince Rupert Order Office
Phone 740 616 Third Ave. West