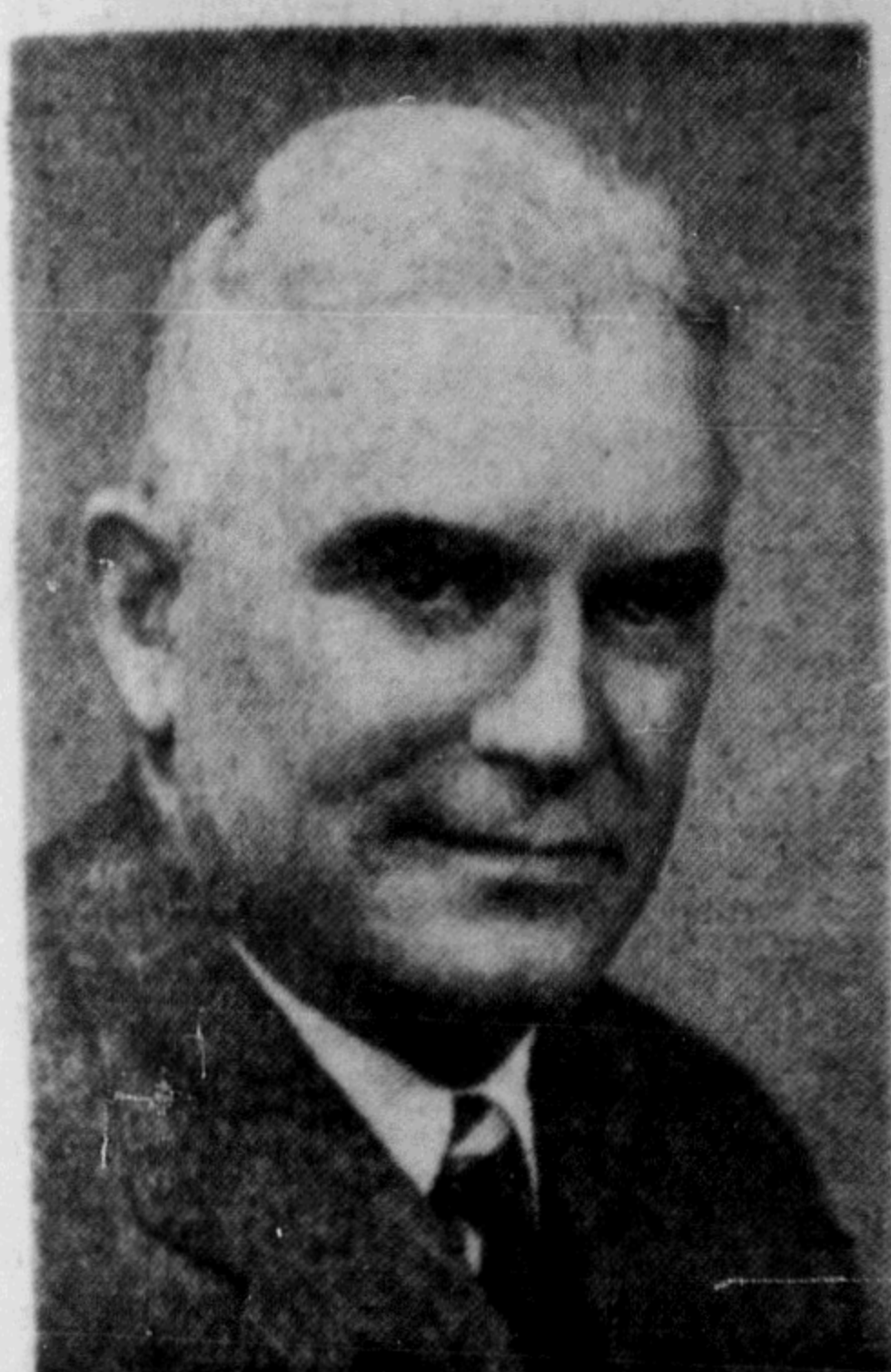


## INDUSTRY PICTORIALIZED

Through pages of these sections of the special Pulp Mill Edition, the Daily News is presenting pictorial features of Columbia Cellulose and other new industries as well as news of old industries, many in new faces and appearance.

### THE PREMIER'S GREETING

I WOULD LIKE TO TAKE THIS OPPORTUNITY OF SAYING HOW GRATIFIED I AM THAT THE CITY OF PRINCE RUPERT IS ENJOYING SO GREAT A DEGREE OF DEVELOPMENT AS EXEMPLIFIED IN THE CONSTRUCTION AND OPERATION OF THE NEW \$27,000,000 PULP MILL OF THE COLUMBIA CELLULOSE COMPANY.

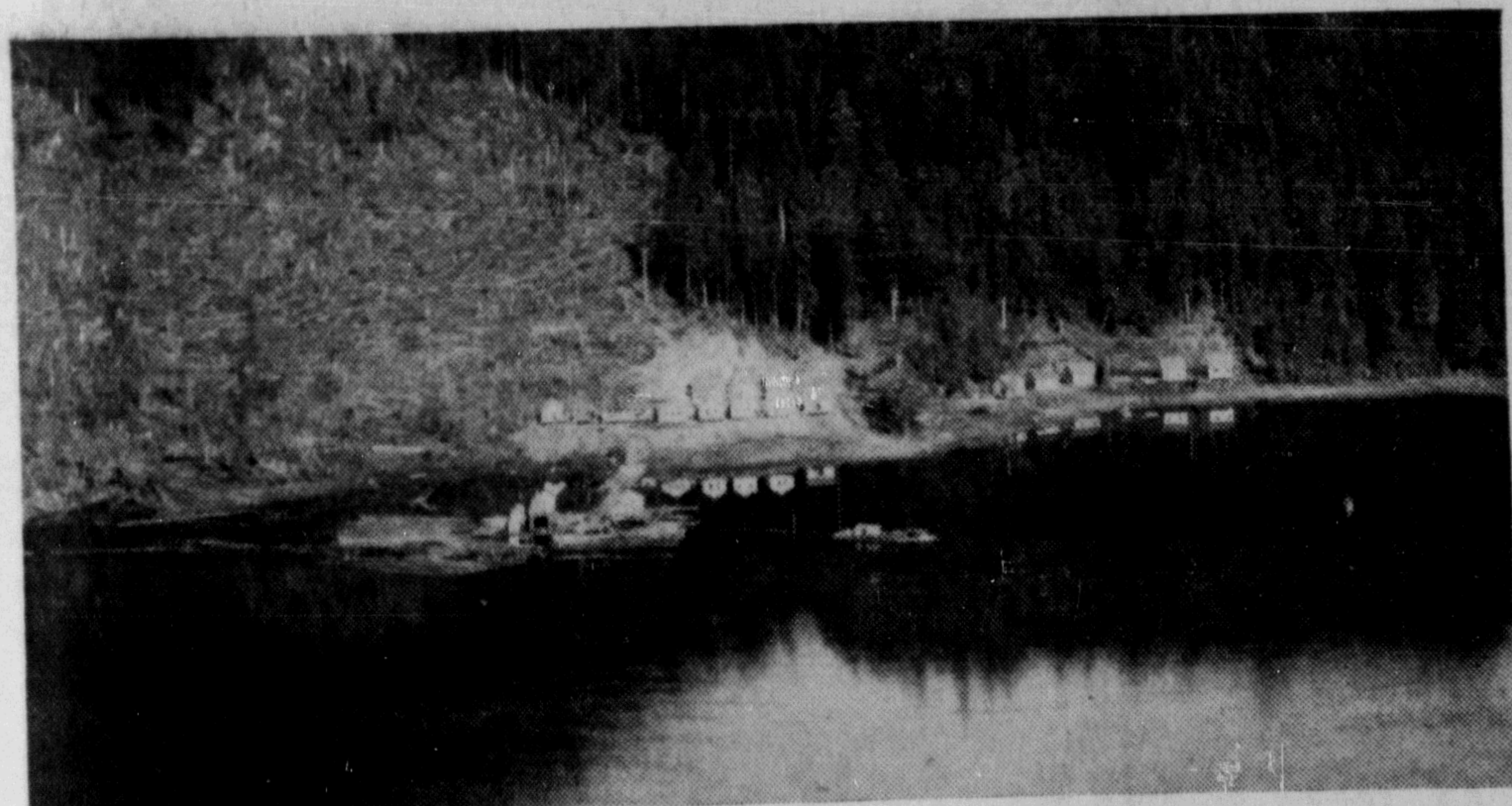


BYRON I. JOHNSON

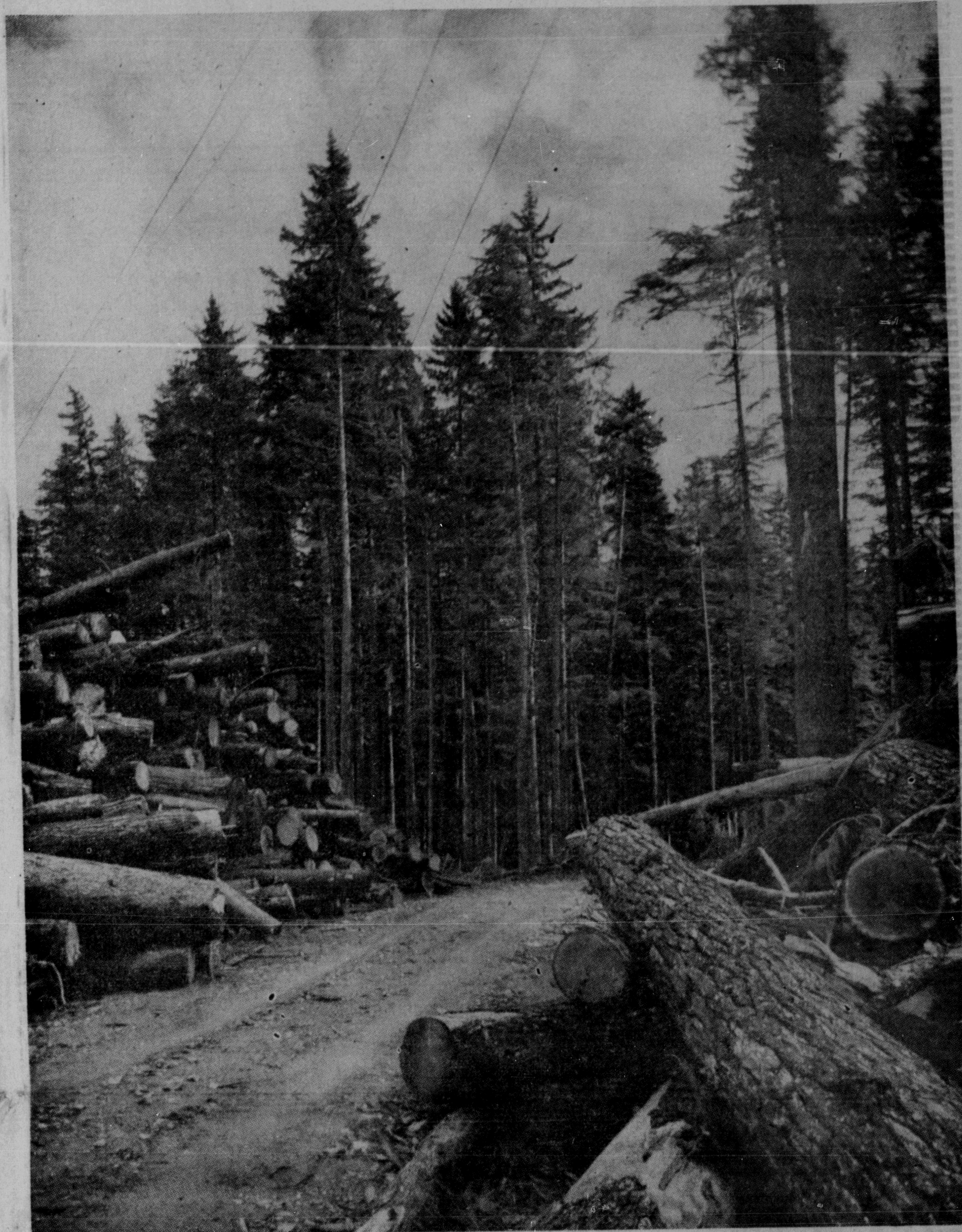
I FEEL THAT THIS IS BUT THE FORE-RUNNER OF MANY OTHER BUSINESSES, AND I LOOK FORWARD TO GREAT EXPANSION, NOT ONLY IN THE CITY OF PRINCE RUPERT, BUT IN THAT TERRITORY THAT EXTENDS FROM PRINCE RUPERT ACROSS THE PROVINCE TO PRINCE GEORGE.

MAY I JOIN WITH ALL THE CITIZENS OF PRINCE RUPERT IN THE FEELING OF ELATION THAT THEY MUST HAVE AT THIS TIME OVER THE WONDERFUL PROGRESS THAT HAS BEEN MADE.

I WOULD ALSO LIKE TO TAKE THIS OPPORTUNITY OF PAYING TRIBUTE TO THE PRINCE RUPERT DAILY NEWS FOR ITS ENTERPRISE IN PUTTING OUT SUCH A SPLENDID SPECIAL EDITION TO MARK THIS HISTORIC AND IMPORTANT OCCASION.



**KHUTZEYMAATEN LOGGING**—Columbia Cellulose Company Limited logging camp at Khutzeymaten Inlet, north of Prince Rupert near the mouth of the Naas River. View of the camp from the air; at left, cutover area which has been logged clean. The base camp is situated on the shore line. By means of powerful donkey engines the cut logs are moved down the slope and dropped in the water, after which they are made up into rafts preparatory to towing to the mill.

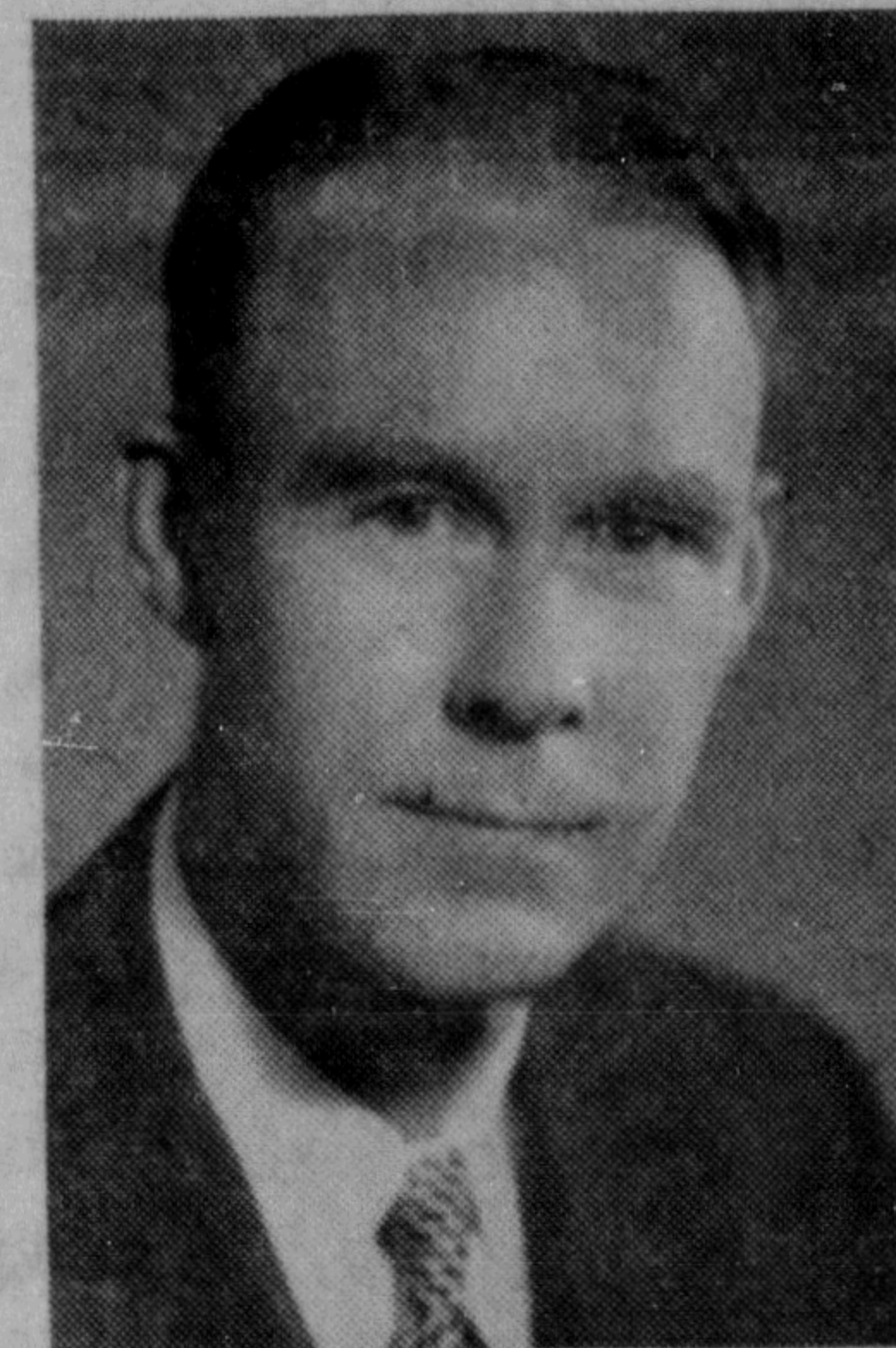


**LOG PRODUCTION**—A striking forest scene illustrative of how Columbia Cellulose is opening up new timber areas in the Terrace district under the forest management principle which embodies treating forests as a crop to be harvested on an annual basis with cutting that will not deplete the basic reserve.

### They Played an Important Part in Columbia Cellulose Building



C. H. KLOTZ  
... Project Engineer



DR. R. H. BALL  
... Co-ordinator



D. G. STENSTROM  
... Consulting Engineer

The  
*Prince Rupert Junior  
Chamber of Commerce*

Appreciates the expression of confidence  
in the Future of Northern British  
Columbia as shown by the

*Columbia Cellulose  
Co. Ltd.*

In the establishment of its  
great new plant in Prince Rupert

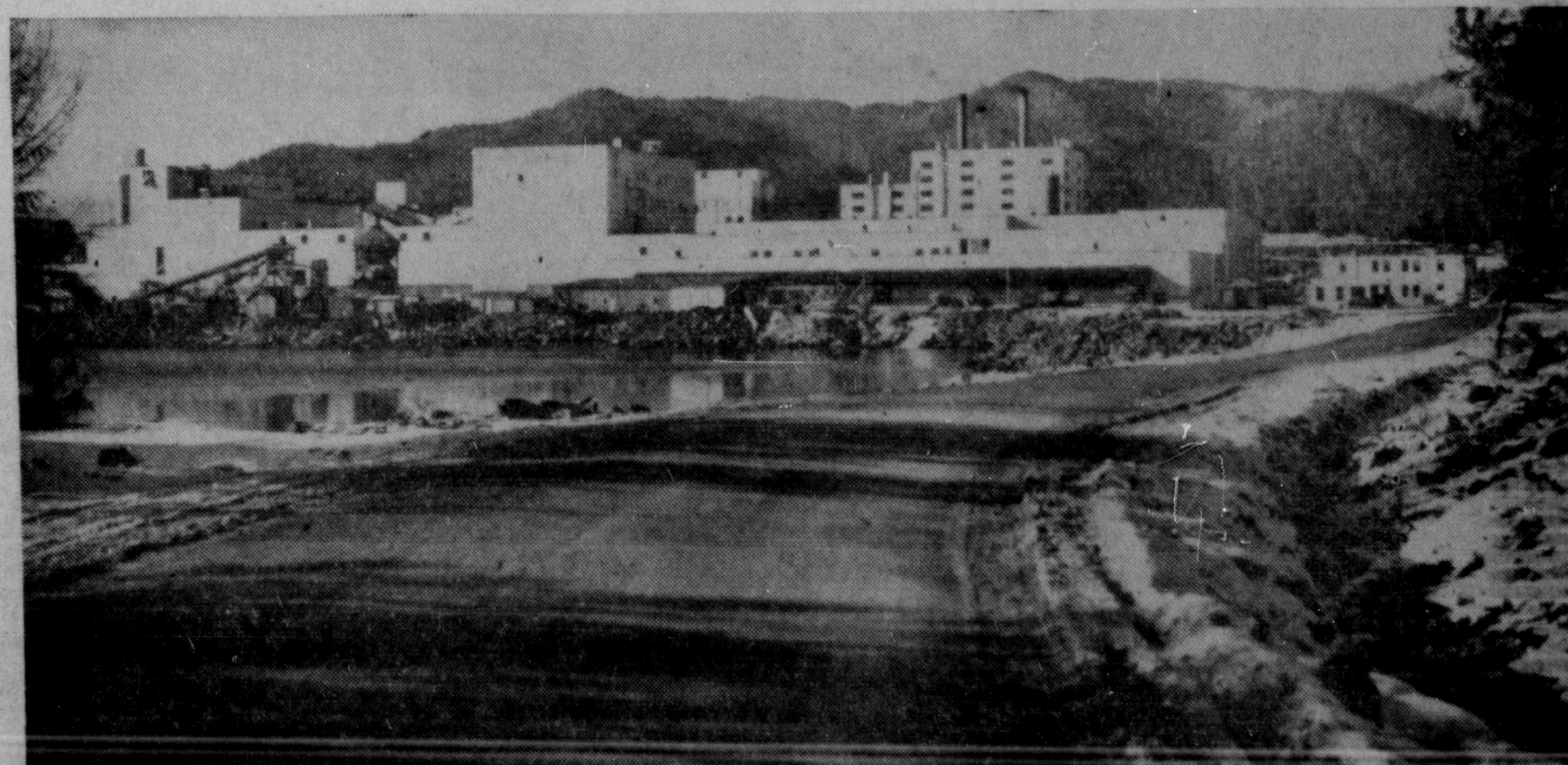
THE PRINCE RUPERT  
*Public Relations Council*

IS HAPPY TO JOIN IN THE WELCOME  
TO

*Columbia Cellulose  
Co. Ltd.*

The Public Relations Council is here to  
Serve You and to advance the Interests of  
Prince Rupert.

For Information Address:  
P.O. Box 958 — Prince Rupert, B.C.



**GENERAL VIEW**—Another interesting general view of the Columbia Cellulose Company Limited plant as seen from the road approaching from Prince Rupert.