

# WILDERNESS GIVES BIRTH TO NEW CITY

(Continued from Page 9)

quired by law to be auctioned publicly, will improve lots well in advance of requirements. Applications for purchase of lots are now being taken. Prices are approximately \$16 a front foot. Lots measure from 55 to 70 feet and are 100 feet deep.

Prospective home-builders will be required to submit their plans to the council which plans to adopt the new National Building Code of Canada.

Cost of home construction is considered from 20 to 30 per cent higher than in less remote

places, although this extra cost is expected to be reduced considerably following arrival of railroad and deep-sea shipping.

Cost of the first homes, built on a semi-prefabricated plan, was around \$14,000 for a three-bedroom dwelling.

Aside from development of the neighborhood centres, already under construction, are the first buildings in Kitimat's three main business centres.

The residential section will do its shopping and seek its entertainment in the Neighborhood Centre, where will be located a super market, drug store, other retail stores, theatre, etc., and

offices of doctors, dentists, accountants and lawyers.

A main building with 18,000 square feet of store space and 7,000 square-foot area for offices is scheduled for completion soon. Space is available for lease from Alcan by businesses locating in Kitimat.

Second business area being developed is the Service Centre, which fronts the main highway into Kitimat four miles to the west, and is located next to the railway right-of-way.

This is the Wholesale and Warehouse Centre and will also include small industries, garage and service station. First to

Supply, a subsidiary of Philpott, Evitt Ltd., of Prince Rupert.

"City Centre" of Kitimat will house the major businesses such as department stores, hotels, etc. First building there is expected this fall.

Interesting sidelight of the town's design is naming of streets in a generic order of flora and fauna, while main traffic lanes have been named to commemorate historic Indian landmarks.

For instance, the main thoroughfare is named Haisla Boulevard, after the name of the original Kitimat Indians. Lahakas Boulevard is named after a creek which drains the

ward, for a "kink" in the Kitimat River where it doubles back on itself.

Residential streets in the first neighborhood under development are named after birds, in alphabetical order. For instance, first street upon entering the section is named Albacross. Among the "P's" are Partridge, Petrel, Pintail, Plover and Ptarmigan.

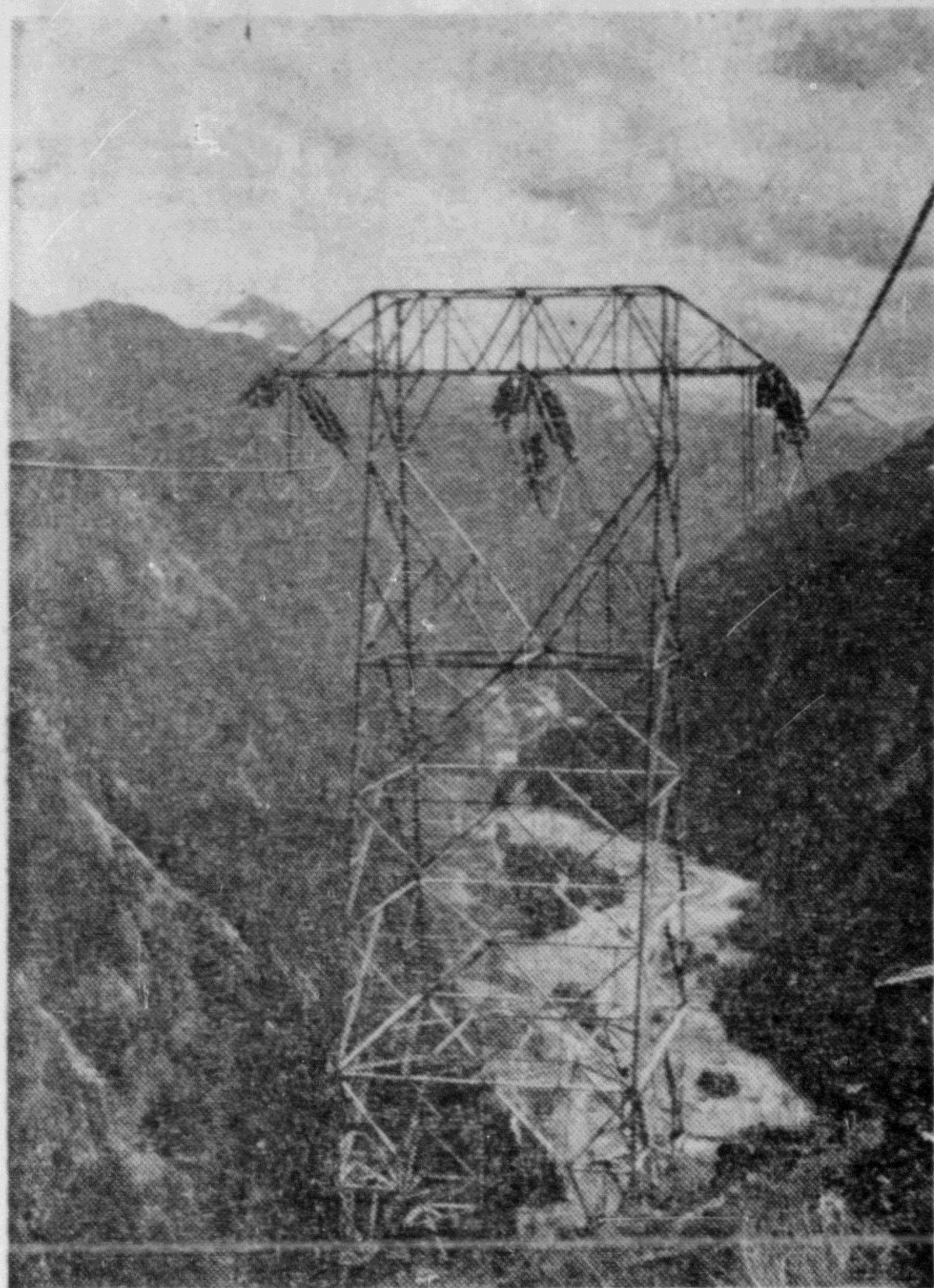
Neighborhood, or shopping centres, will also have names, called after well-known construction projects in Alcan's development. Nechako, the first centre, is named after the river which was dammed to provide the huge hydro reservoir. Others may be named after

transmission line, and the lakes of Tweedsmuir Park. Alcan officials state emphatically that Kitimat will not be a company town.

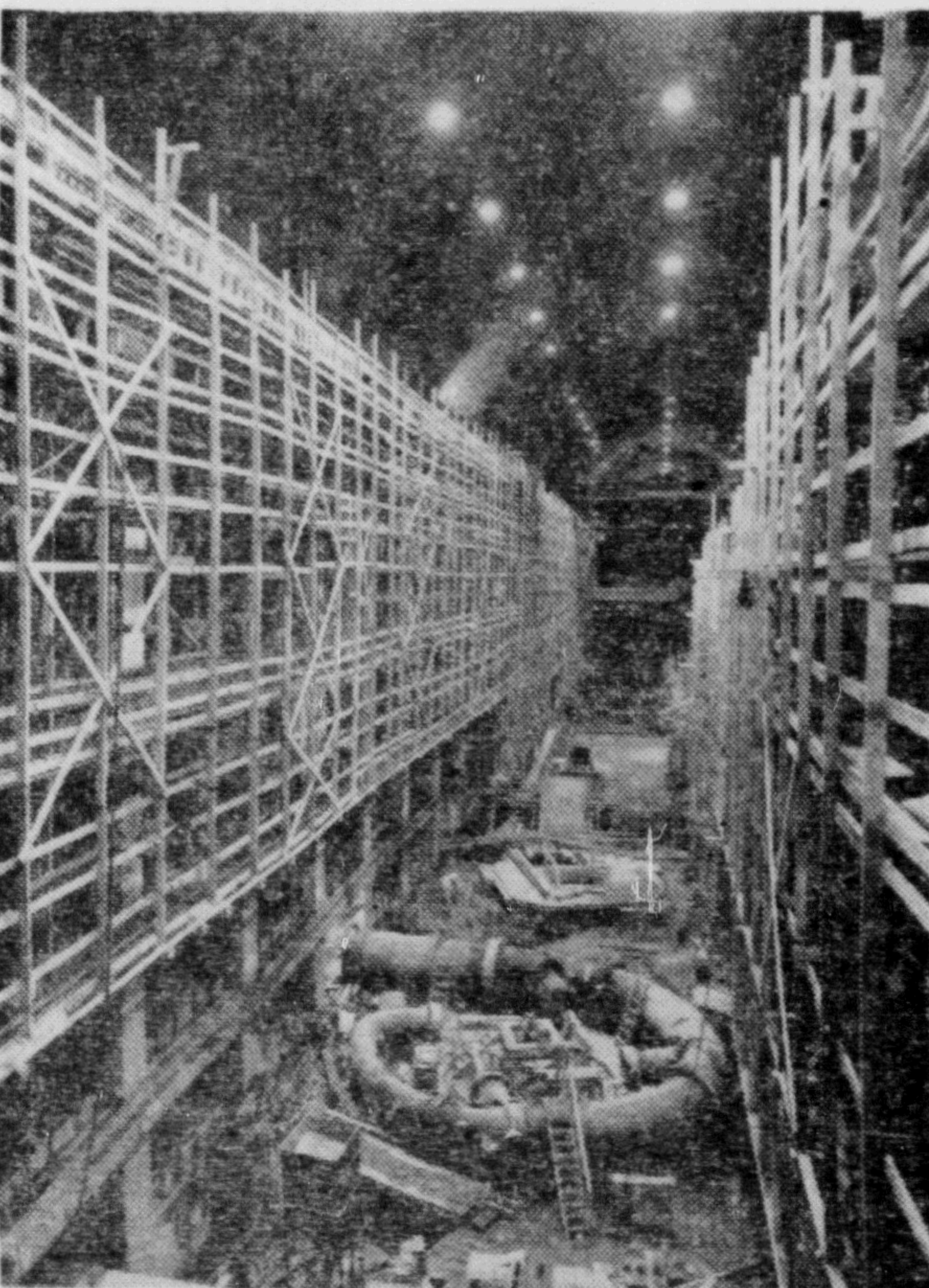
**HOLROYD**  
WORM GEAR REDUCTION  
UNITS

Proven to contain the  
World's most efficient  
worm gear. Built to  
highest British Standards. Contact—

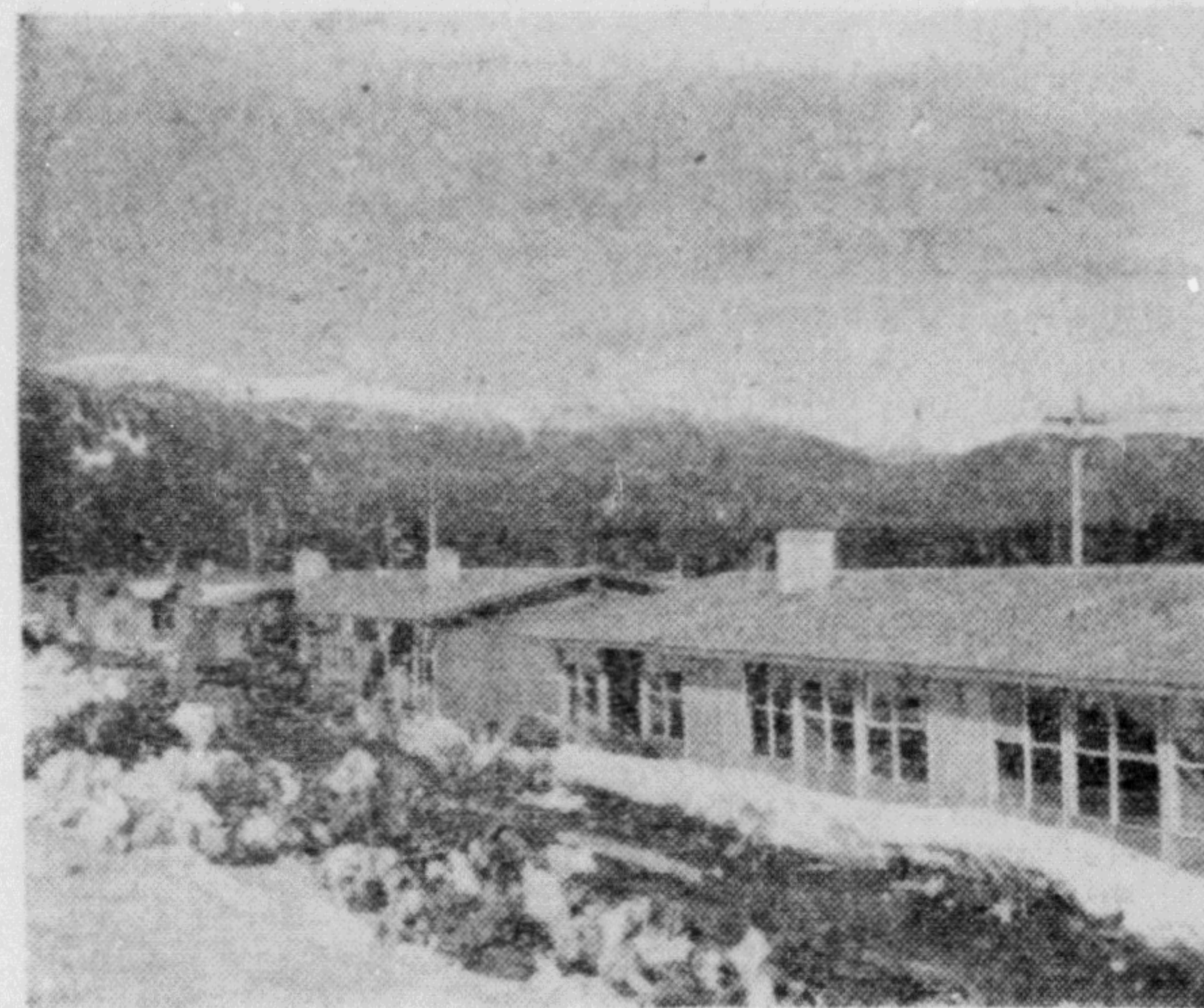
**CROSSMAN**  
MACHINERY CO. LTD.  
806 BEACH AVE.  
VANCOUVER 1, B.C.



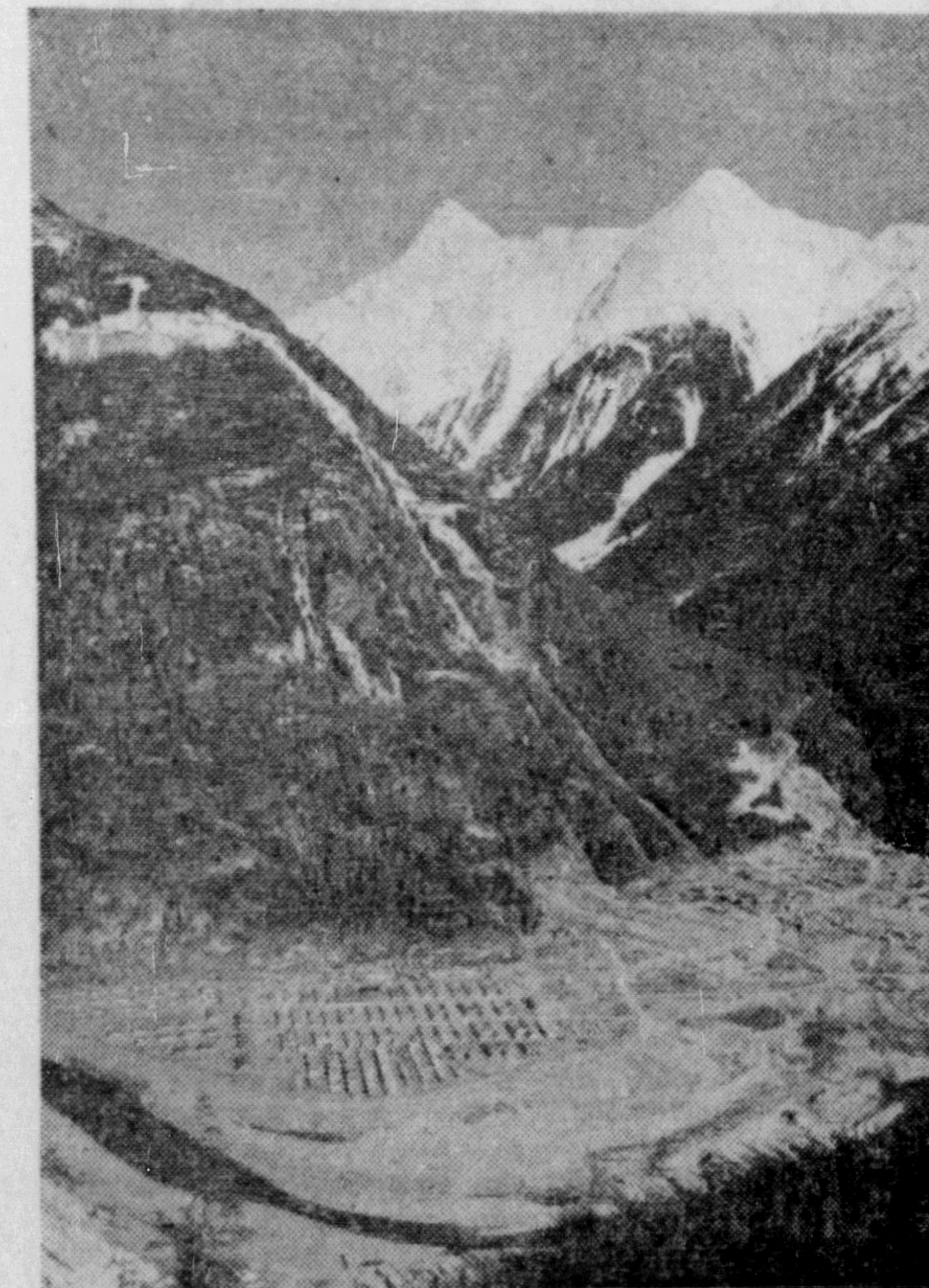
**TRANSMISSION LINE** which tower 100 feet into the air stretch across 50 miles of most difficult terrain to supply Alcan's Kitimat aluminum smelter from the Kemano Bay powerhouse. The line, designed to transmit more than 1,000,000 horsepower of electrical energy passes over a 5,300-foot mountain pass. Cross marks where an electrician is working.



**POWERHOUSE AT KEMANO** is built inside a man-made cavern at the base of the outfall of penstocks which drop a head of water 2,600 feet from a tunnel through the mountain, is designed to contain eight generating units capable of producing 150,000 horsepower each.



**FIRST KITIMAT HOMES** located on the townsite were opened last winter. Built at high cost because of remoteness of the area from supplies, the houses are being sold to Alcan workers for \$14,000 each.



**KEMANO BAY** power site shows the snow-capped barrier through which a 10-mile tunnel was pushed from a reservoir on the east side. Cross marks exit of tunnel from which underground penstocks lead to powerhouse in cavern.

## "OPERATION KITIMAT"



**Here, in British Columbia, where a new industrial empire is being fashioned, a multi-million dollar aluminum project—the largest single undertaking ever promoted by private enterprise—is shaping to completion.**

### SMELTER AT KITIMAT

The smelter at Kitimat goes into production this summer to produce aluminum at the rate of 91,500 tons annually. Designed for an output of 550,000 tons a year, this smelter will eventually become the largest of its kind in the world.

### HARBOUR AT KITIMAT

Located on tidewater, Kitimat has modern harbour and dock facilities for the fast handling of incoming and outgoing cargo. Already in operation, the port is becoming increasingly active. The first shipments of aluminum ore from Jamaica have been received. Kitimat wharves will assist in the growth and expansion of the District by providing access to ocean transport for other regional enterprises as well as the aluminum industry.

### TOWNSITE AT KITIMAT

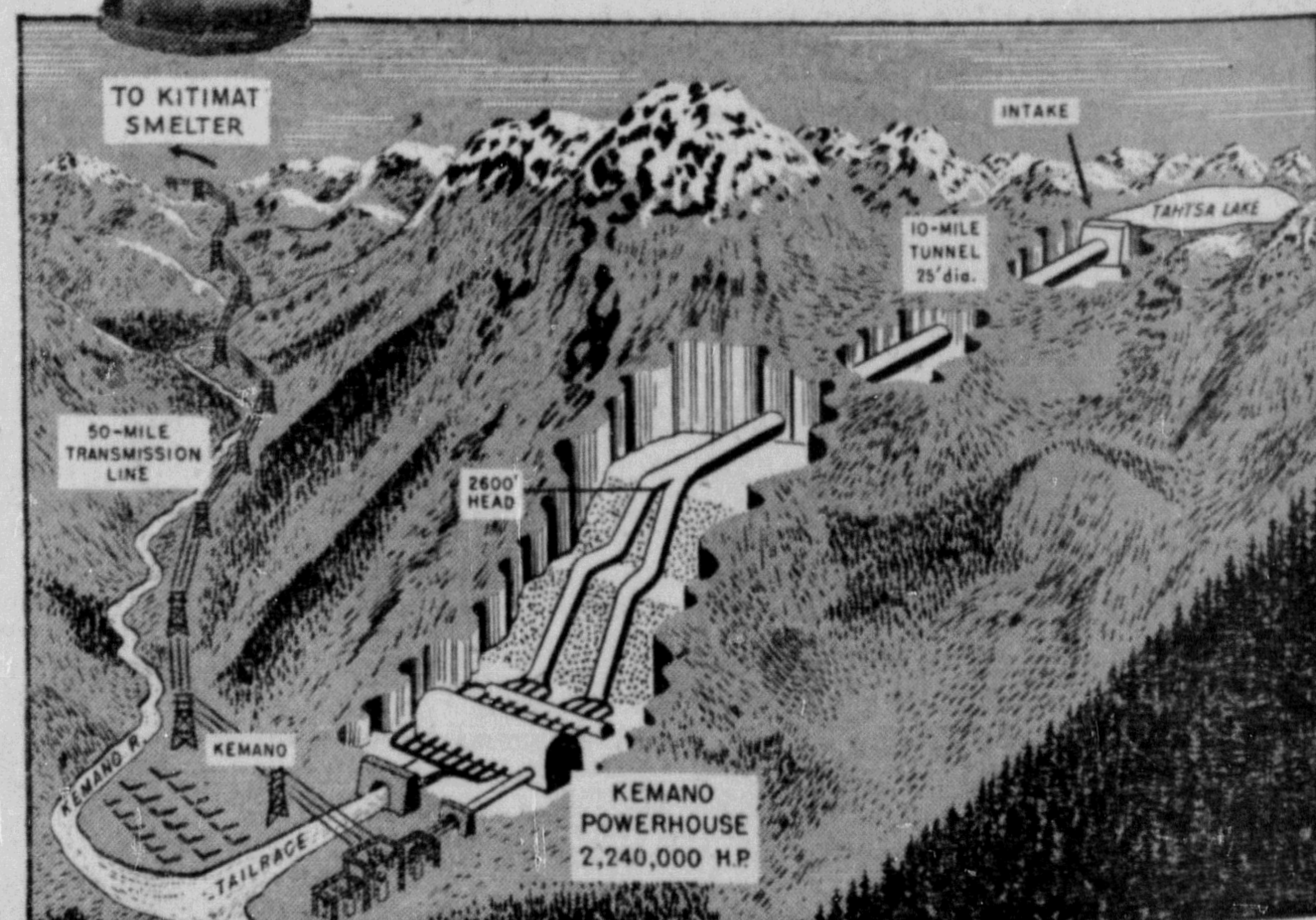
The Town of Kitimat is gradually rising in the forest clearing. Planned in the tradition of British Columbia, Kitimat has the opportunity of setting a new high standard in town planning. Homes are being occupied and soon the initial population will number 6,000 to 7,000 persons where but a few years ago no houses existed. As the aluminum industry grows and new enterprises come into the area, Kitimat will expand. The designs of the Townsite by experts provide for an eventual 50,000 population.

### POWERHOUSE AT KEMANO

Hydro electric power for the Kitimat project is developed at Kemano 50 miles away. Here in a subterranean cavern, carved by rock miners beneath a mile high mountain, the powerhouse is located. Waters from a chain of lakes have been diverted to drop one-half mile through a man-made tunnel 10 miles long and 25 feet in diameter. The hydro electric power thus developed at Kemano will eventually be produced on a scale never before attempted.

Shown on the map below are the sites of various links in this major aluminum development.

### POWER DEVELOPMENT FOR THE KITIMAT PROJECT



Aluminum is "packaged power." The electricity needed to produce one ton of aluminum would light the average home for nearly a generation! By developing abundant, low-cost power at Kitimat, this Canadian enterprise has created employment and income for the men who build and operate the dams and power house, the docks and smelter and power lines it needs; and for the more than one thousand independent Canadian companies who turn aluminum into countless forms important to industry and our own daily living.

**Aluminum**



**Company of Canada, Ltd.**

VANCOUVER

MONTREAL

QUEBEC

TORONTO

WINDSOR

Producers and Processors of Aluminum for Canadian Industry and World Markets